

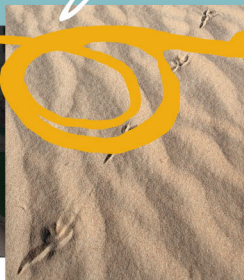
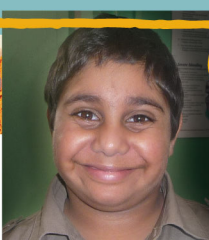


Australian Government

WILLANDRA LAKES REGION

# World Heritage Area

MUNGO NATIONAL PARK



Issue 7 - April 2013

## Message from the Executive Officer

This year is one of transition and renewal. We are coming to the end of the current Caring for Our Country funding program, and have started the negotiation process for the next few years' funding. The Commonwealth has invited us to negotiate for funding directly with them which we greatly appreciate. Hopefully this will give us a firm base from which to operate over the next few years.

We are also updating our Plan of Management and will undertake stakeholder consultation in April to develop an Issues and Options paper. This should reflect stakeholders' priorities for the future as well as exploring appropriate representative arrangements for our advisory committees. Our committee structures have changed little over the last twenty years so it is timely to consider these while we update our Plan of Management. Those interested in the management of the Willandra Lakes will have the opportunity to contribute their ideas and consider who is best placed to represent their views in the future.

Efforts are underway to prepare for this year's Mungo Youth Project with support from the Catchment Mgt Authority and the Indigenous Heritage Program. A conference is planned for early September, and we are currently developing a program for school to engage with leading up to the conference. Follow the link on the home page of the [visitmungo.com.au](http://visitmungo.com.au) website for more information.

This issue contains an update on progress with the Mungo Centre, our proposed Keeping Place for Mungo Man and Woman. Also read about our ongoing scientific partnership with Texas Tech University, and an update on recent improvements implemented at Spring Hill by the Griffiths family. With Easter and school holidays coming up take note of the Discovery Program, particularly if you know people intending to visit the region. I hope you enjoy this issue. *Richard Minter*

## Area Manager's update

Autumn is generally a busy time for visitors to Mungo NP. Many will be taking advantage of the newly implemented On-line booking system for Mungo Shearer's Quarters accommodation. National Parks and the Willandra WHA unit staff are currently working on more training for the Discovery Rangers. The program aims to continue to develop skills for the current program of guided tours and also for the delivery of new activities to engage with the many school groups interested in learning about Mungo as part of the National Curriculum. Discovery Rangers are also involved with Wilder Quest. In May they will be engaged in a workshop on this NPWS state wide program.

Wilder Quest provides school students a resource to explore the Australian environment.

'Be a Tourist in your own Town' campaign is a promotional program offered by Mildura Tourism and held over a week in 18 -26 May. It is a great initiative to get locals out and about and more aware of the tourist attractions in their region. Mungo NP Discovery Program and some of the local tour operators are offering discounted tours and hope to attract the many locals who say 'I've always wanted to go to Mungo but I just haven't got there yet....' Sunraysia residents will be able to learn more about Mungo NP and the Willandra WHA and to spread the word to their friends, relatives or other visitors to the region.

As many would know Nathan and Sophie Wakefield are neighbours to Mungo NP and have developed a range of excellent tourist accommodation and visitor experiences at Turlee Station Stay. Sophie and Nathan are leaving the region to take up a new venture. It has been a pleasure to work with them and I would like to wish them all the best.

With the arrival of Autumn we will be turning attention from wild-fires to prescribed burning, road works and fire trail maintenance and pest control will continue.

*Jo Gorman*  
Area Manager  
Lower Darling



Discovery Rangers taking a tour

## INSIDE THIS ISSUE



Bush Tucker Recipe



CT Scanning of Skeletal Remains



Upgrades to Spring Hill Station



Discovery Program



NEWSLETTER



Australian Government

WILLANDRA LAKES REGION

World Heritage Area  
MUNGO NATIONAL PARK

## Discovery Program and update



### ABORIGINAL DISCOVERY WALKS, TALKS AND TOURS



#### March/April Discovery Tour Program

Date	Morning Tag-Along Tour	Morning Fore Shore Walk	Afternoon Tag-Along Tour	Evening Adventure
Good Friday 29 March	-	-	2:00pm	-
Easter Saturday, 30 March	-	9:30am	2:00pm	Dusk @ Visitors Centre
Easter Sunday, 31 March	9:30am	-	2:00pm	-
Easter Monday, 1 April	-	9:30am	2:00pm	-
Tuesday, 2 April	9:30am	-	2:00pm	-
Wednesday, 3 April	-	9:30am	2:00pm	-
Thursday, 4 April	9:30am	-	2:00pm	-
Friday, 5 April	-	9:30am	2:00pm	-
Saturday, 6 April	9:30am	-	2:00pm	Dusk @ Visitors Centre
Sunday, 7 April	-	9:30am	2:00pm	-
Monday, 8 April	9:30am	-	2:00pm	-
Tuesday, 9 April	-	9:30am	2:00pm	-
Wednesday, 10 April	9:30am	-	2:00pm	-
Thursday, 11 April	-	9:30am	2:00pm	-
Friday, 12 April	9:30am	-	2:00pm	-
Saturday, 13 April	-	9:30am	2:00pm	Dusk @ Visitors Centre
Sunday, 14 April	9:30am	-	2:00pm	-

## Mungo Centre - An Update

### BACKGROUND

The Foundation for National Parks and Wildlife (FNPW) and the National Parks and Wildlife Service (NPWS) are committed to the Mungo Centre project and have invested considerable time and money in its progress. Through the development of an extensive Business Case, NPWS will aim to deliver a compelling case for government to support the development of the Centre.

### SOCIO-ECONOMIC ASSESSMENT & BUSINESS CASE

Expressions of interest were called for a new socio-economic assessment and business case and the OEH has recently awarded a contract to *Urbis Pty Ltd*. Completion is expected by early April. The core purpose of the Centre will be as a 'keeping place' and research facility. The Socio-Economic Assessment and Business Case will position the Centre in relation to the needs it will serve and the benefits, both social and commercial.

### TIMELINE

The timeline for the project (given below) is dependant on the Business Case producing a positive outcome.

7 February	Business Case commences
25 February	Foundation considers the status of the Project
End March	Outcome of Business Case is clarified
5 April	Draft Business Case submitted to NPWS by <i>Urbis Pty Ltd</i>
April to May	NPWS endorses Business Case. FNPW considers the Business Case with feedback or endorsement.

### PROJECT ADVANCES

Two documents, the *Interpretation Strategy* and *Content Brief* have been completed by consultants for NPWS. These documents underscore the need for the Mungo Centre as an important first step in protecting and interpreting Mungo National Park. A *Vision* for the Centre has been documented to advance the stakeholder's understanding of what the Centre will aspire to be. Also, various tourism studies have been undertaken by NPWS, and others.

### NPWS ENGAGEMENT

The Mungo Centre project has the active attention of Anne King, Head of the National Parks and Wildlife Service. The Project also continues to engage senior management of NPWS including Steve Millington, Regional Manager - Far West; Carl Solomon, Director, Tourism and Partnerships; Wendy Hills, Manager, Cultural Tourism; Nicholas Conner, Principal Conservation Economist; and Stuart Schramm, Director, Business Reform and Development. The Project has been given the highest priority in business planning for the Far West Region. Today the Project is better aligned with government objectives because government has identified indigenous and cultural tourism projects as paramount to their long term goals (NSW 2021 Plan Goals). Also, reconciliation has advanced and the recognition of the first Australians in our constitution now seems likely with a referendum expected within the next three years.

Steve Millington  
Regional Manager (Far West)



NEWSLETTER





Australian Government

WILLANDRA LAKES REGION

World Heritage Area  
MUNGO NATIONAL PARK

## CT Scanning of Human Remains housed at the Australian National University Canberra.

Art Durband is a Paleoanthropologist interested in the ancient history and early inhabitants of Australia. Art received permission from the Willandra Lakes WHA Elders Council to use Computed Tomography (CT) to scan ancient fossil remains of individuals housed at the Australian National University in Canberra. CT Scanning is a medical imaging procedure that uses X-rays and digital computer technology to create detailed two – or three dimensional images of the body. Several of the Willandra Lakes WHA remains were scanned in 2010 and more earlier this year. Art hopes that the scans will give detailed measurements of the long bones that can be used to understand patterns of mobility, to determine how much travelling these ancient people had to do on a regular basis to hunt and gather. It can also reveal previous injuries such as fractures that subsequently healed. The CT Scanning will also mean any future studies on remains from the Willandra Lakes WHA can be taken from the data provided from the CT scanning as the Elders aspirations are to have the material returned to country in the future. We hope to have Art back in Canberra in May to conduct some more detailed scanning.

*Leanne Mitchell*



Above: Scanning in progress



Right: Elders standing beside the CT scanner

## Upgrades to Spring Hill Station

Individual Property Plans (IPP'S) commenced in the Willandra World Heritage area around 1998, some 14 years or so ago. Significant amounts of money was spent in implementing these plans on the WHA properties to protect World Heritage values. It is great to see, at long last works progressing on Spring Hill. After purchasing Spring Hill in September 2012, we were able to adjust the original design of the IPP on Spring Hill. This was based on the same principles used on Baymore and Pan Ban to protect archaeological and aboriginal cultural values. These principles also fit in with us as landholders to obtain the best management practice for our sheep enterprise. A bore was put down a few years ago and power connected to it in June 2012. This was put down to replace ground tanks requiring decommissioning to stop stock trafficking over sensitive areas. over the past 2 months 11km's of PVC, 19km of poly and 9 new watering points have been installed in and outside the World Heritage Area. As these works overlap with landholder projects they are cost shared with the landholder and world heritage funding. All the labour and heavy equipment required, has been carried out and supplied by the landholder. Relocation of water points away from corners and locating them centrally in paddocks is already having a positive effect. The whole paddock is utilised for grazing. Future rains will really show the benefits as the scoured out and heavily impacted areas revegetate. We hope the Commonwealth continue to regard the Willandra Lakes as a valued World Heritage Area and address issues as they arise to protect this unique part of the world.

*Story and photos by Griffiths Family*

## Willandra Language Project

On the 22<sup>nd</sup> 23<sup>rd</sup> Feb 2013 Steve Curran and Ricky Mitchell conducted recordings of welcome in language that took place in Buronga, Dareton & Hay to be added to the interpretation welcome signs at the entrance to Mungo NP. The recordings are of people from the Paakantji, Mutthi Mutthi & Ngyiampaa tribes doing welcome in their own language. When you enter the park from the south you will be welcomed by the Mutthi Mutthi. From the west you will be welcomed by Paakantji and from the north you will be welcomed by the Ngyiampaa people. There has also been a recording completed for Turlee Station Stay with Sophie describing the history of the property. *Ricky Mitchell*



Ricky Mitchell & Aunty Maureen Taylor



Steve Currans & Aunty Junette Mitchell



NEWSLETTER



Australian Government

WILLANDRA LAKES REGION

# World Heritage Area

MUNGO NATIONAL PARK

## Bush Tucker

## Kids Corner

### Old Man Saltbush - *Atriplex nummularia*

Is a species of saltbush also known by the common names of bluegreen saltbush and giant saltbush. This plant is native to Australia and is the largest of the Australian saltbushes. It can grow to 3m height and 2– 4m wide

**Source of food** – Aboriginal people use this as a source of food. Leaves and young shoots are edible and can be cooked, and so can the seed. It can also be ground into a meal and used as a thickener in soups or made into breads. You can also dry Old Man Saltbush and use it to add flavour to your meat and your stews.

**Medicinal use** - Salt bush had also been used by aboriginal people for medicine and applied on cuts and stings

Mutthi Mutthi tribe used Old Man salt bush as their fire stick They would rub it against River Red Gum to start a fire.

Salt bush is available in plant nurseries and online

### Bush Tucker Recipe

Salt Bush Kebabs

Ingredients:

Salt bush stems (leaves on)  
Kangaroo, Onion, Tomato, Capsicum

Method:

Cut Salt bush stems  
to desired length

Cut meat, onion, tomato & capsicum to  
desired thickness

Thread the meat, onion, tomato &  
capsicum onto the saltbush stems and  
cook them to taste

Note\* if cooking Kangaroo it taste best cooked rare as over  
cooking can dry it out and it can become chewy as it has a very  
low fat content.

Recipe: Richard Mintern



Photo by Leanne Mitchell



**Name:** Wedge-tailed Eagle

**Scientific Name:** *Aquila audax*

**Description:** It has long, broad wings, fully feathered legs and a wedge-shaped tail. with a wingspan of up to 2.27 m (7 ft 5 in) and a length up to 1.06 m it is the largest bird of prey in Australia

**Eats:** Rabbits, wallabies and small kangaroos, they will also eat lizards, snakes, foxes & feral cats

**Where:** Found across Australia

**Interesting fact:** The female is larger than the male, the female averages about 4.5kg, while males are about 3.5kg



COLOUR ME IN

### Contact us:

Executive Officer:

Richard Mintern ☎ (03) 5021 8908

✉ richard.mintern@environment.nsw.gov.au

Community Projects Officer:

Ricky Mitchell ☎ (03) 5021 8906

✉ ricky.mitchel@environment.nsw.gov.au

Aboriginal Cultural Heritage Officer:

Leanne Mitchell ☎ (03) 5021 8911

✉ leanne.mitchelle@environment.nsw.gov.au

Administration Assistant:

Molly Walker ☎ (03) 5021 8902

✉ molly.walker@environment.nsw.gov.au



NEWSLETTER

www.visitmungo.com.au